



NEW HAMPSHIRE
DHHS
DEPARTMENT OF
HEALTH & HUMAN SERVICES

Hampstead Hospital & Residential Treatment Facility

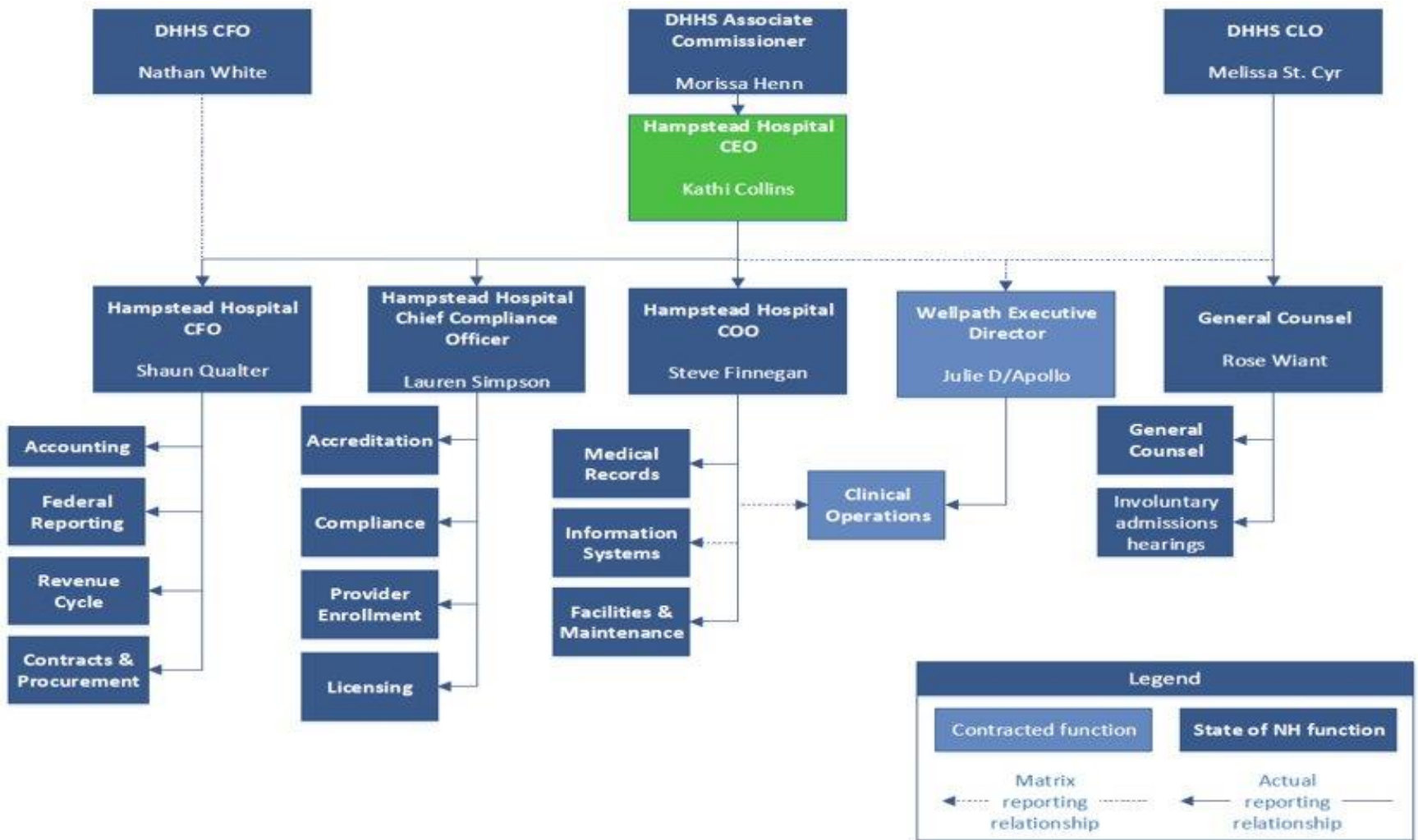
April 25, 2023

Kathleen Collins, Chief Executive Officer

Shaun Qualter, Chief Financial Officer

Division Mission

To provide trauma-informed, patient and family centered mental health treatment in an accepting and supportive environment.



Services & Population Served

- HRTF admits children and adolescents, ages 4 to 17 on a voluntary or involuntary basis for inpatient treatment.
- Young adults, ages 18 to 25 are admitted on a voluntary basis only for inpatient treatment.
- HRTF provides services to individuals that present with the following mental health concerns: suicidal ideation, intent to harm, depressive symptoms, thought disorders, dysregulated behaviors, anxious distress, neurodevelopmental disorders, or substance misuse.
- Psychiatric Residential Treatment Facility (PRTF) planned to open in Quarter 2, 2023.

Hospital Capacity

- 4 secure Inpatient Psychiatric Units capable of serving 70 patients.
- 3 units currently operational due to available staffing resources.
- Total current bed capacity for 3 units = 55 patients, staffing dependent.

1 Residential Level of Care Unit – Site of the first Psychiatric Residential Treatment Facility Level 5 (PRTF) in NH. 12 beds.

Inpatient Units:

- Madison – 15 bed unit. Vacant, behavioral health furniture being installed and continued recruitment of staff.

- Lincoln – 23 bed unit, approximate ages served 12 – 18.

- Pierce – 16 bed unit, approximate ages served 4 – 14.

- Washington – 16 bed unit, approximate ages served 16 – 25.

Residential Unit:

- Kennedy – 12 bed unit, ages youth to 21, requires CAT Assessment Level 5 for out of home episode of care. One level below inpatient treatment.

Hampstead Hospital and Residential Treatment Facility

	SFY2022 Actual	SFY2023 Adjusted Authorized	SFY2024 Governor Budget	SFY2024 House Budget	SFY2025 Governor Budget	SFY2025 House Budget
Activity 980010 – Hampstead Hospital						
General Funds	\$0	\$0	\$9,259,689	\$9,259,689	\$4,715,284	\$9,120,437
TOTAL FUNDS	\$0	\$0	\$33,756,141	\$33,756,141	\$29,350,988	\$33,756,141

House Changes

• **Hampstead Hospital Residential Treatment Facility – 980010 – 26480000**

- \$4,404,153 general funds added to cover projected expenses.
- Conversion of 21 full-time temporary positions to full-time permanent. Positions were originally temporary because Hampstead Hospital was acquired outside of the budget process.

HB1 Budget Areas For Consideration

None

HB2 Budget Areas For Consideration

None